



509 NE 1st Street The Douglass F – East End

Features:

- **2134 Square feet – 3 Bedrooms**
- **Elegant 10 ft ceilings with Crown Molding**
- **8-foot Solid Core Interior Doors**
- **Corner Balcony off Master Bedroom**
- **Office/ Flex Space**
- **Stainmaster carpet with premium stain and soil resistance on Second Floor**
- **Walk In Pantry**
- **Stainless Steel Appliances – 36” Gas Range with Commercial Style Hood, Dishwasher, Microwave**
- **Granite or Quartz Countertops**
- **Kohler Plumbing Fixtures & Faucets**
- **Luxury Jetta 20” Deep Bathtubs – Jetta Air Massage Master Bathtub**
- **Frameless Glass Shower Door in Master Bath**
- **Solid Hardwood Floors**
- **Atrium Stairwell with Skylight**
- **Spacious linen Closet**
- **Laundry room with utility sink suitable for Full Size Washer and Dryer**
- **Pella Proline Double Hung Windows with Energy Star Rating and InsulShield Energy Saving Technology**
- **Automatic Fire Sprinkler System and Fire Walls between homes**
- **R19 Insulated Walls**
- **HOA dues cover all exterior maintenance**
- **Security System**
- **Two Car Garage with Liftmaster 8500 automatic opener with MyQ Control from your cell phone**
- **Brick or Stone Front Exterior, Brick, Stone and Siding East Exterior**
- **Masonry and LP Smart Siding with 25 yr warranty on back and east exterior**
- **Solid African Mahogany Entry Door with Beveled Glass and Emtek Door Hardware**
- **Geothermal Heat & Air Systems with Geothermal Hot Water Preheat System**

Currently Under Construction - \$675,000

Upgrades available at additional cost:

- **Wine Cooler**
- **Underground Safe Room**
- **Custom Closets**
- **Epoxy Coated Garage Floor**

View our website at www.thehillokc.com

**For sales information call 405-228-1099
Matt Marcacci - First Source Real Estate**



THE HILL
AT BRICKTOWN

Oklahoma City's *New* Urban Living Experience

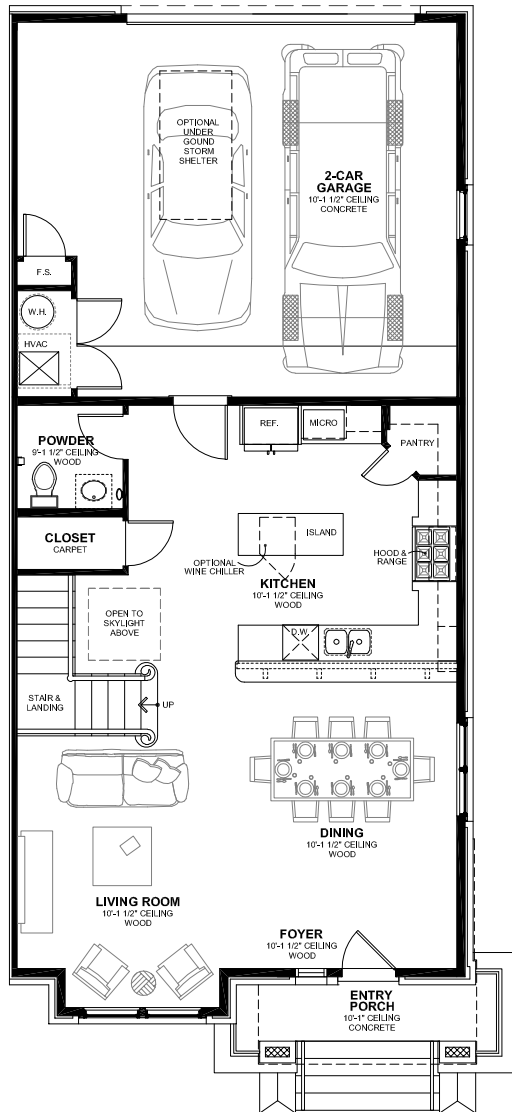
509 N.E. 1st Street

DOUGLASS - F - EAST

(DS-F-EAST)

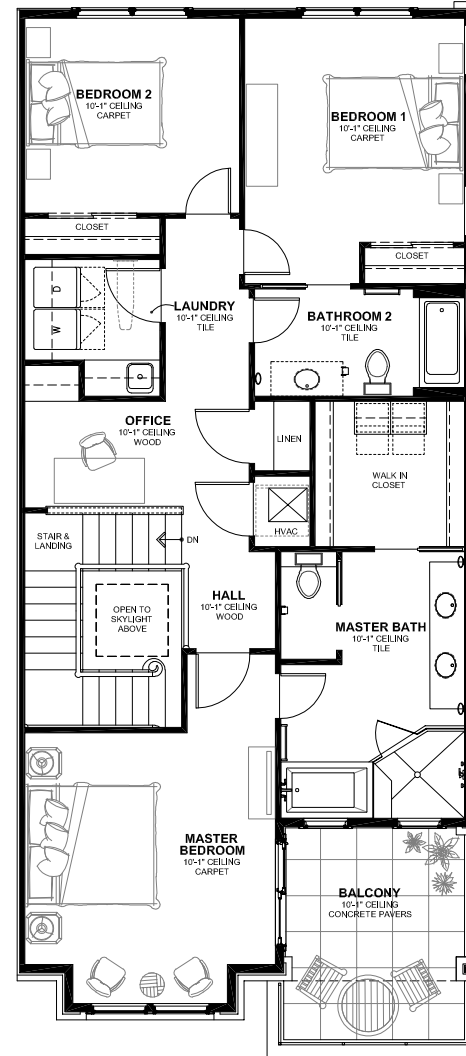
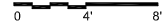
UNIT 114

DOUGLASS - F - WEST SQUARE FOOT SUMMARY	
LEVEL 1 AREA	866
LEVEL 2 AREA	1,295
TOTAL CONDITIONED AREA	2,161
GARAGE AREA	559
ENTRY PORCH AREA	84
BALCONY	143
TOTAL GROSS AREA	2,947



DOUGLASS - F - EAST
FIRST FLOOR PLAN

Scale: 3/32" = 1'-0"



DOUGLASS - F - EAST
SECOND FLOOR PLAN

Scale: 3/32" = 1'-0"

