



505 NE 1st Street The Douglass H

Features:

- 2110 Square feet – 3 Bedrooms
- Elegant 10 ft ceilings with Crown Molding
- 8-foot Solid Core Interior Doors
- Balcony off Master Bedroom
- Office/ Flex Space
- Stainmaster carpet with premium stain and soil resistance on Second Floor
- Walk In Pantry
- Stainless Steel Appliances – 36” Gas Range with Commercial Style Hood, Dishwasher, Microwave
- Quartz Countertops
- Kohler Plumbing Fixtures & Faucets
- Luxury Jetta 20” Deep Bathtubs – Jetta Air Massage Master Bathtub
- Frameless Glass Shower Door in Master Bath
- Solid Hardwood Floors on 1st Floor
- Atrium Stairwell with Skylight
- Spacious linen Closet
- Laundry room with utility sink suitable for Full Size Washer and Dryer
- Pella Proline Double Hung Windows with Energy Star Rating and InsulShield Energy Saving Technology
- Automatic Fire Sprinkler System and Fire Walls between homes
- R19 Insulated Walls
- HOA dues cover all exterior maintenance
- Security System
- Two Car Garage with Liftmaster 8500 automatic opener with MyQ Control from your cell phone
- Brick or Stone Front Exterior, Brick, Stone and Siding East Exterior
- Masonry and LP Smart Siding with 25 yr warranty on back and east exterior
- Solid African Mahogany Entry Door with Beveled Glass and Emtek Door Hardware
- Geothermal Heat & Air Systems with Geothermal Hot Water Preheat System

Currently Under Construction – \$635,000

Upgrades available at additional cost:

- Wine Cooler
- Underground Safe Room
- Custom Closets
- Epoxy Coated Garage Floor

View our website at www.thehillokc.com

For sales information call 405-228-1099
Matt Marcacci - First Source Real Estate

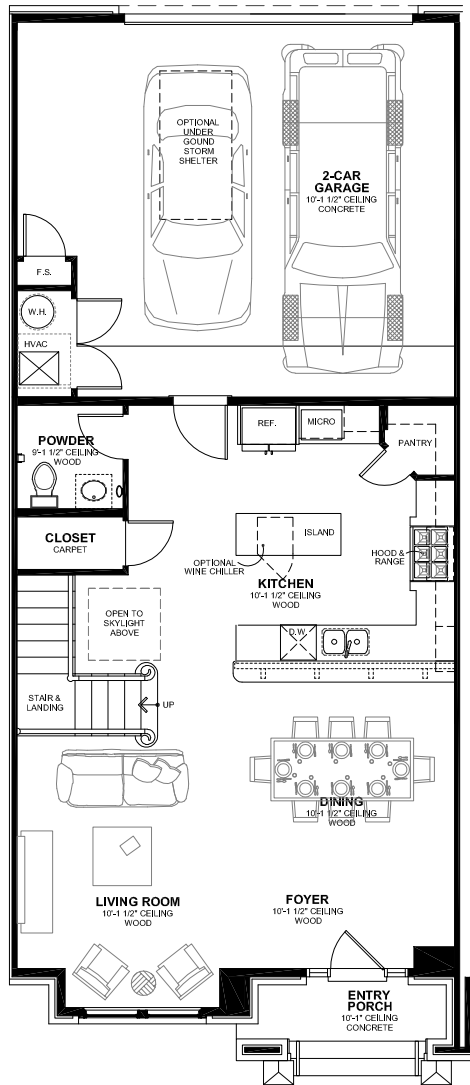


THE HILL AT BRICKTOWN

Oklahoma City's New Urban Living Experience

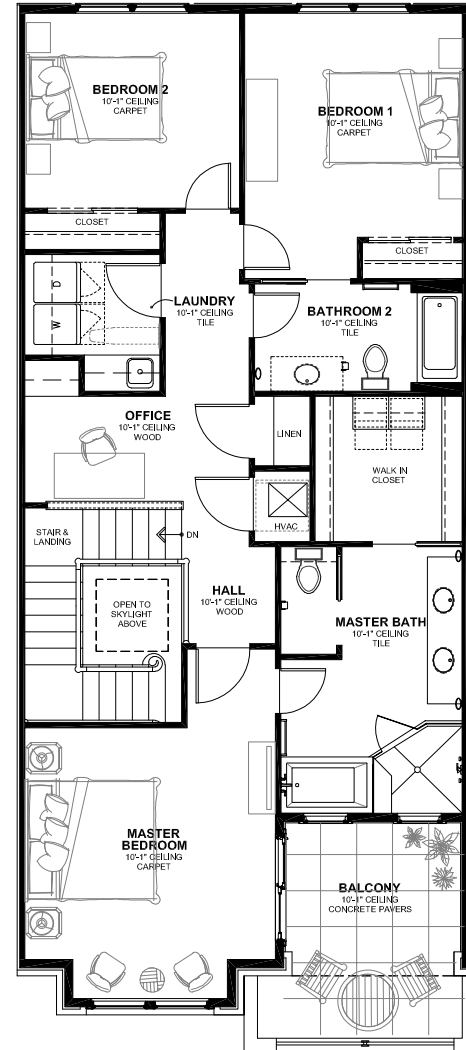
505 N.E. 1st Street DOUGLASS - H (DS-H) UNIT 112

DOUGLASS - H SQUARE FOOT SUMMARY	
LEVEL 1 AREA	848
LEVEL 2 AREA	1,267
TOTAL CONDITIONED AREA	2,115
GARAGE AREA	546
ENTRY PORCH AREA	54
BALCONY	143
TOTAL GROSS AREA	2,853



**DOUGLASS - H
FIRST FLOOR PLAN**

Scale: 3/32" = 1'-0"



**DOUGLASS - H
SECOND FLOOR PLAN**

Scale: 3/32" = 1'-0"

